

Maximum 673 kW (900 hp) @2300 RPM (PLEASURE CRAFT)

STANDARD EQUIPMENT

MGX-5114SC-HD & MGX-5114DC

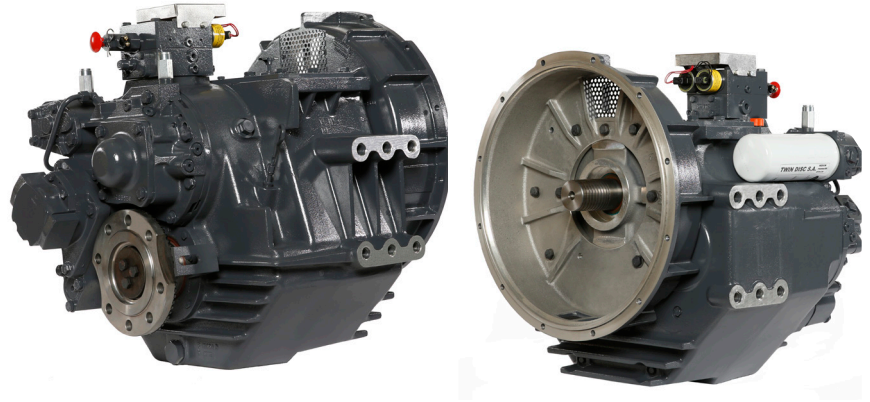
Vertical offset, cast iron housing

SAE J617 housing no. 1

Electric GP-valve with manual override

EC050 Profile module – interface for engagement signals

Oil strainer and oil filter



INPUT RATINGS - KILOWATS (KW) (HORSEPOWER (HP))*

For service classification definitions and important notes refer to www.twindisc.com, the Twin Disc Marine Product Guide or contact Twin Disc directly.

MGX-5114SC-HD

Reduction Ratios :1	Pleasure Craft @ 2300 RPM	Light Duty @ 2300 RPM	Intermediate Duty @ 2100 RPM	Medium Duty @ 1800 RPM	Continuous Duty @ 1800 RPM
1.02, 1.12 1.50, 1.74, 2.04	673 kW (900 hp)	629 kW (843 hp)	504 kW (676 hp)	394 kW (528 hp)	358 kW (480 hp)
2.54			466 kW (625 hp)		
3.00	578 kW (775 hp)	540 kW (724 hp)	451 kW (605 hp)	361 kW (484 hp)	328 kW (440 hp)

MGX-5114DC

Reduction Ratios :1	Pleasure Craft @ 2300 RPM	Light Duty @ 2300 RPM	Intermediate Duty @ 2100 RPM	Medium Duty @ 1800 RPM	Continuous Duty @ 1800 RPM
3.28, 3.43 4.17	673 kW (900 hp)	629 kW (843 hp)	504 kW (676 hp)	361 kW (484 hp)	347 kW (465 hp)
4.59	634 kW (850 hp)	591 kW (793 hp)	448 kW (601 hp)		
4.86	604 kW (810 hp)	565 kW (758 hp)	429 kW (575 hp)		

* Ratings shown for use with standard right-hand rotation engines.
The maximum allowable rated engine speed is 3000 rpm.



Specifications subject to change without prior notice in the interest of continual product improvement.
Contact your local Twin Disc representative for engineering specifications, Survey Society Approvals
and Classifications.

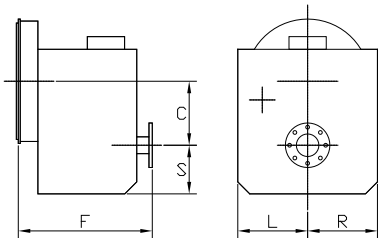
Scan QR code to see Twin Disc's entire Marine product line.



OPTIONS

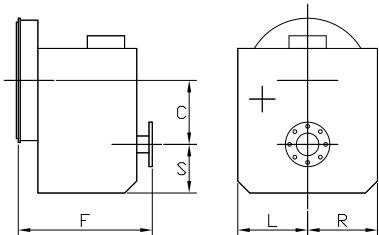
	MGX-5114SC-HD	MGX-5114DC
Flexible coupling for 14" flywheel (SAE J620 size 355)	X	X
Input flange size GWB 587.35 for freestanding installation	X	X
Mechanical control valve	X	X
ECO50 E-Troll module interface for engagement & trolling signals	X	X
Harness with single point interface to Twin Disc EC300 control system	X	X
Oil cooler with thermostatic bypass valve	X	X
Companion flange/bolts set	X	X
Monitoring devices to customer's specification	X	X
Mounting brackets	X	X
Live PTO:		
SAE J744 size 82-2, 16-4, max. 58 Nm (SAE "A", 2-bolt)	X	X
SAE J744 size 101-2, 22-4, max. 209 Nm (SAE "B", 2-bolt)	X	X
SAE J744 size 101-2, 25-4, max. 338 Nm (SAE "B-B", 2-bolt)	X	X
SAE J744 size 127-4, 32-4, max. 593 Nm (SAE "C", 4-bolt)	X	X
Hydraulic clutchable PTO:	X	X
SAE J744 size 127-4, 32-4, max. 600 Nm (SAE "C", 4-bolt)		
Dry weight including SAE #1 housing and SAE 355 flexible coupling	286 kg	394 kg

MGX-5114SC-HD



C	190 mm (7.47")
S	161 mm (6.33")
F	483 mm (19.00")
L	279 mm (11.00")
R	279 mm (11.00")

MGX-5114DC



C	277 mm (10.90")
S	250 mm (9.85")
F	483 mm (19.00")
L	286 mm (11.25")
R	286 mm (11.25")

Twin Disc, Incorporated reminds users of these products that their safe operation depends on use in compliance with engineering information provided in our catalog. Users are also reminded that safe operation depends on proper installation, operation and routine maintenance and inspection under prevailing conditions. It is the responsibility of users (and not Twin Disc, Incorporated) to provide and install guards or safety devices which may be required by recognized safety standards or by the Occupational Safety and Health Act of 1970 and its subsequent provisions.

United States of America • Australia • Belgium • Canada • China • India • Italy • Singapore • Switzerland

For nearly a century, we've been making boats perform better and more reliably. From system-design consultation to application development to in-service support, Twin Disc provides fully integrated propulsion solutions that will optimize your craft's performance, reliability and safety over the years. Bring Twin Disc aboard early in the development process, and you'll enjoy a lifetime of enhanced operating value.

TRANSMISSIONS • ELECTRONIC CONTROLS • EXPRESS JOYSTICK SYSTEM® • SAILDRIVES • EXPRESS POSITIONING® • ARNESON SURFACE DRIVES • MARINE CONTROL DRIVES • ROLLA PROPELLERS • BOW & STERN THRUSTERS • STEERING SYSTEMS • RUDDERS • TRIM TABS



Twin Disc, Incorporated
Racine, Wisconsin 53403 USA
Phone +1-262-638-4000
Fax +1-262-638-4482
www.twindisc.com

TD-Bulletin-MGX-5136_Series
© 2015, Twin Disc, Incorporated
Printed in the USA - 11/2015